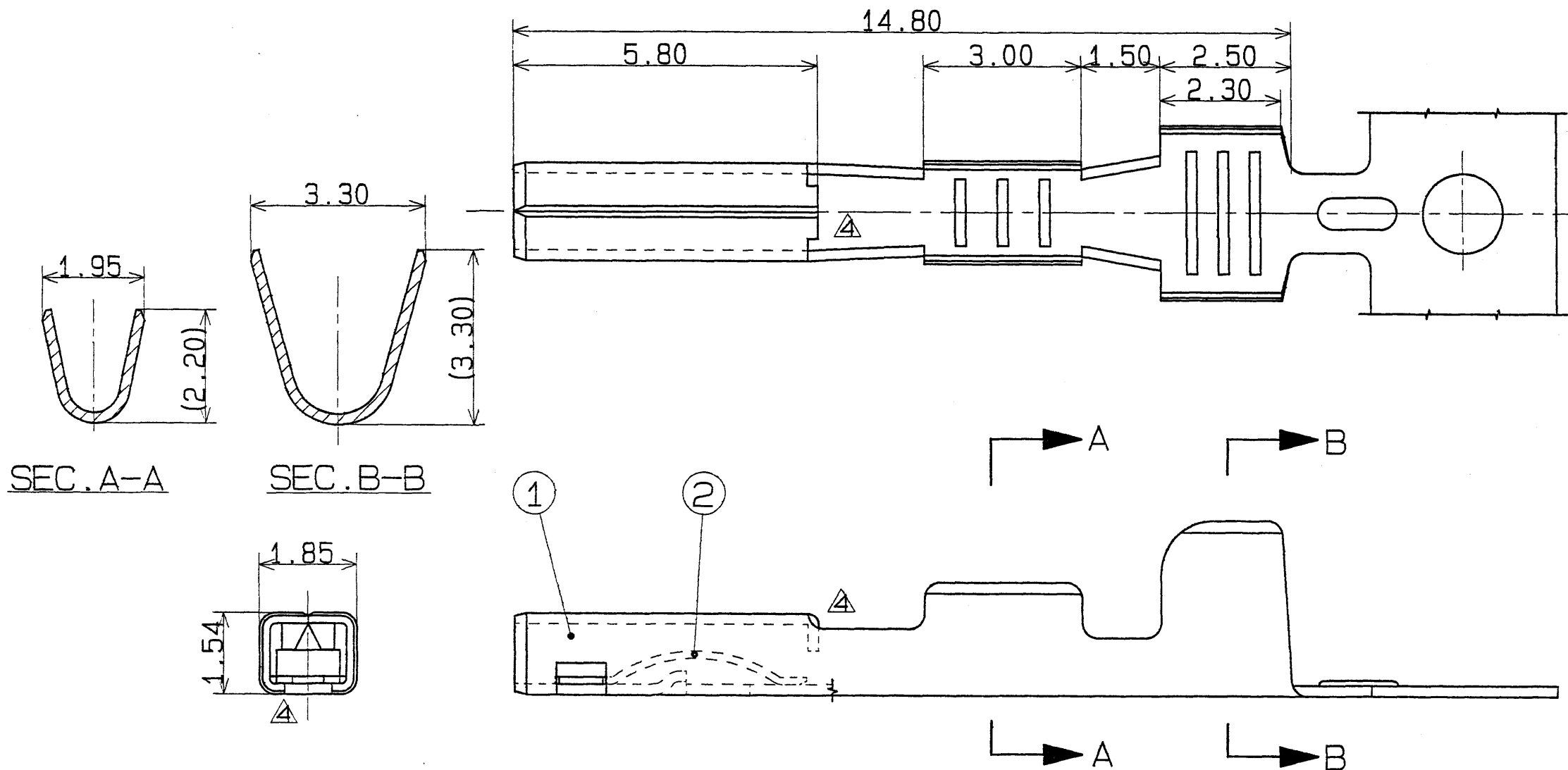


PART NO.	NO.	COMPONENT PART NO.	PART NAME	MATERIAL & SPEC
7116-1261	①	—————	BODY FOR SP (F) TERMINAL	BsR Sn PLATING
7116-1705	②	7157-8605-02	SPRING FOR SP (F) TERMINAL	Becu Sn PLATING
7116-1261-08	①	—————	BODY FOR SP (F) TERMINAL	BsR AU PLATING
7116-1705-08	②	7157-8605-08	SPRING FOR SP (F) TERMINAL	Becu AU PLATING

B

B



注記
 1. 嵌合相手品番: 7114-1260
 2. 適用電線サイズ AVS 0.2H~AVS 0.5
 3. 7116-1705, 7116-1705-08は、防水ECU専用ターミナルとする。

△ NOTES
 1. MATING PART NO.: 7114-1260
 2. APPLICABLE WIRE SIZE: AVS 0.2H~AVS 0.5
 3. 7116-1705 AND 7116-1705-08 ARE THE EXCLUSIVE TERMINAL OF WATERPROOF ECU.

A

A

ISSUE MARK

△	94.07.21	CHANGED TABLE & ADDED NOTE	C94-L986	H.F	CUSTOMER				MATL. SPEC.	SEE TABLE	TREAT. & FIN.	SEE TABLE			
△	94.05.20	RELEASEFD & RENEW & CHANGED FORM	C94-L632	M.T	CUSTOMER PART NO.				CUSTOMER DWG NO.						
LET	DATE	REVISION RECORD	NO.	CHKD	OFFICE				TRIAL PART NO.						
GENERAL TOLERANCE					VENDOR				NAME SP (F) TERMINAL II						
	10MAX	50MAX	100MAX	250MAX	2500VR	ANGLE	ECCENT	DWG TYPE	DWG SOURCE	DWG DATE	UNIT	SCL	ANGLE	PART NO.	7116-1261 ETC.
A	±0.15	±0.2	±0.3	±0.5	±0.75	±30'	0.1	R	RENEW	94.05.20	mm	10/1	3	CH. CODE	
B	±0.2	±0.3	±0.55	±0.95	±1.4	±30'	0.1	APPROVED	CHECKED	CHECKED	DESIGN	DRAWN	DWG NO.	7116-1261: R	
©	±0.3	±0.5	±0.8	±1.4	±2	±30'	0.15		石山	高橋	T. WATANABE	NAKAJIMA			
SPECIFIED					MASS					YAZAKI CORPORATION					
					g					83.02.24 94.07.21					